

## **Historic, archived document**

Do not assume content reflects current scientific knowledge, policies, or practices.



62.47



# WHOLESALE PRICE LIST



## of Keystone Vegetable Seeds

Quotations for prompt Order, Immediate Shipment

— from —

# CORNELI SEED COMPANY

Office and Warehouse  
101 Chouteau Ave.  
St. Louis, Mo.

Trial Grounds  
Keystone Valley Farm  
St. Louis County

St. Louis, Mo.

WHOLESALE SEEDSMEN

JANUARY 4, 1938

CONDITIONS OF SALE: This list cancels all previous quotations.

These prices are for prompt acceptance, subject to prior sale and our further confirmation, and to change without notice.

Prices are f. o. b. St. Louis, Mo. When seamless or heavy cotton bags, boxes or barrels are necessary for safe transportation, they will be charged at cost and are not returnable.

NO CHARGE will be made for light inside cotton bags used in packing garden and flower seeds.

TERMS: Garden and flower seeds 2 per cent for cash in 10 days, net 60 days to firms of approved credit; otherwise, C. O. D. or sight draft less 2%. Other items net cash. All accounts subject to demand draft when due.

**NOTICE:** The total number of full bags of a species ordered for one shipment will determine the price of full bag lots of each variety within the species. Beans and Peas are considered as one species. Turnips and Rutabaga are considered as one species. For Example: If one bag each of ten varieties of Beans and Peas is ordered for one shipment the price for "10 bag lots" will apply.

Varieties ordered in less than bag lots will be charged at the prices listed for the quantity and variety. Prices on larger quantities upon request.

We give no warranty, express or implied as to description, quality, productiveness, or any other matter of any seeds, bulbs or plants we send out, and we will not be in any way responsible for the crop. CORNELI SEED COMPANY

### BEANS

Western Grown—Selected—Field Rogued—Hand Picked

#### Green Pod Dwarf (120 lbs. per bag)

	Full Bag Lots	30 to 119 Lbs.	10 to 29 Lbs.	1 to 9 Lbs.
<b>Note: 10 bag lots 1/2 less</b>	Per Lb.	Per Lb.	Per Lb.	Per Lb.
Black Valentine	\$.08	\$.08 1/2	\$.09 1/2	\$.10 1/2
Black Valentine Stringless	.10 1/2	.11	.12	.13
Bountiful	.09 1/2	.10	.11	.12
Burpee's Stringless Green Pod	.09 1/2	.10	.11	.12
Dwarf Horticultural	.09 1/2	.10	.11	.12
Full Measure	.09 1/2	.10	.11	.12
Giant Stringless Green Pod	.09 1/2	.10	.11	.12
Keystone Valley Stringless	.10 1/2	.11	.12	.13
Landreth Stringless	.09 1/2	.10	.11	.12
Longfellow	.08	.08 1/2	.09 1/2	.10 1/2
Red Valentine	.09 1/2	.10	.11	.12
Red Valentine Stringless	.09 1/2	.10	.11	.12
Rogers Stringless Refugee	.10 1/2	.11	.12	.13
Tendergreen	.10 1/2	.11	.12	.13
Tennessee Green Pod	.10	.10 1/2	.11 1/2	.12 1/2

#### Field Beans (Hand Picked)

Great Northern	.06 1/2	.07	.08	.09
Michigan Navy	.06 1/2	.07	.08	.09
Pinto Beans	.06 1/2	.07	.08	.09
Dark Red Kidney	.10	.10 1/2	.11 1/2	.12 1/2
White Kidney	.10 1/2	.11	.12	.13
White Marrow	.09 1/2	.11	.12	.13

#### Wax Pod Dwarf

Black Wax (Pencil Pod)	.11 1/2	.12	.13	.14
Brittle Wax (Round Pod Kidney Wax)	.08 1/2	.09	.10	.11
Currie's Rust Proof Black Wax	.08 1/2	.09	.10	.11
Davis' White Kidney Wax	.10 1/2	.11	.12	.13
Dwarf Stringless Wax	.10 1/2	.11	.12	.13
Improved Golden Wax	.09 1/2	.10	.11	.12
Sure Crop Wax	.11	.11 1/2	.12 1/2	.13 1/2
Top Notch Golden Wax	.11	.11 1/2	.12 1/2	.13 1/2
Unrivalled Wax	.11	.11 1/2	.12 1/2	.13 1/2
Wardwell's Kidney Wax	.18	.18 1/2	.19 1/2	.20 1/2
Improved Stringless Kidney Wax	.18	.18 1/2	.19 1/2	.20 1/2

#### Dwarf Lima Beans

Burpee's Large Bush Lima	.12 1/2	.13	.14	.15
Burpee's Improved Bush Lima	.13 1/2	.14	.15	.16
FORDHOOK BUSH LIMA	.15	.15 1/2	.16 1/2	.17 1/2
Henderson's Bush Lima	.09 1/2	.10	.11	.12
Jackson Wonder Speckled	.11	.11 1/2	.12 1/2	.13 1/2
McCrea's Lima	.16 1/2	.17	.18	.19
Woods Prolific	.10	.10 1/2	.11 1/2	.12 1/2

#### Pole Beans

Burger's Stringless (Wh. Seed Ky. Won.)	.11	.11 1/2	.12 1/2	.13 1/2
Dutch Caseknife	.12	.12 1/2	.13 1/2	.14 1/2
Golden Cluster Wax	.12 1/2	.13	.14	.15
Ideal Market	.10 1/2	.11	.12	.13
Kentucky Wonder	.09 1/2	.10	.11	.12
Kentucky Wonder Wax	.11 1/2	.12	.13	.14
Lazy Wife	.10 1/2	.11	.12	.13
London Horticultural	.10 1/2	.11	.12	.13
McCaslan	.10 1/2	.11	.12	.13
Missouri Wonder	.11	.11 1/2	.12 1/2	.13 1/2
Red Speckled Cut Short	.10 1/2	.11	.12	.13
St. Louis Perfection White	.11 1/2	.12	.13	.14
Scarlet Runner	.15	.15 1/2	.16 1/2	.17 1/2
Striped Creaseback	.10 1/2	.11	.12	.13
Tennessee Wonder (Egg Harbor)	.10 1/2	.11	.12	.13
White Cornfield, Improved	.11	.11 1/2	.12 1/2	.13 1/2
White Creaseback	.11	.11 1/2	.12 1/2	.13 1/2
Yardlong	.25	.25 1/2	.26 1/2	.27 1/2

#### Pole Lima Beans

Florida Butter Speckled	.11 1/2	.12	.13	.14
King of the Garden Lima	.12 1/2	.13	.14	.15
Large Speckled or Christmas Lima	.12 1/2	.20 1/2	.21 1/2	.22 1/2
Large White Lima or Butter	.12 1/2	.13	.14	.15
Small White Lima or Sieva	.10	.10 1/2	.11 1/2	.12 1/2

### SWEET CORN

Note: 10 bag lots 1/2 less  
Hybrids and Topcrosses  
(100 lbs. per bag)

	Full Bag Lots	10 to 99 Lbs.	1 to 9 Lbs.
Country Gentlemen (3x6) Hybrid	\$.17	\$.18	\$.19
Ex. Ea. Bancross No. 39 Topcross	.13 1/2	.15	.16
Golden Cross Bantam (Hybrid)	.13 1/2	.15	.16
Marcross No. 39 Topcross	.14	.15	.16
Narrow Grain (14x13) Hybrid	.16 1/2	.18	.19
Suncross No. 39 Topcross	.14	.15	.16

#### White Varieties (100 lbs. per bag)

Black Mexican	.08 1/2	.09 1/2	.10 1/2
Country Gentleman	.08 1/2	.09 1/2	.10 1/2
Early Minnesota	.08	.09	.10
Early Evergreen	.08	.09	.10
Howling Mob	.08 1/2	.09 1/2	.10 1/2
Long Island Beauty	.08	.09	.10
Mammoth Late Sugar	.08	.09	.10
Narrow Grain Evergreen	.08 1/2	.09 1/2	.10 1/2
Oregon Evergreen (Resistant to Ear-Worms)	.08	.09	.10
Stowell's Evergreen	.08	.09	.10
Stowell's Evergreen (Canner Strain)	.08 1/2	.09 1/2	.10 1/2
Vanguard	.08 1/2	.09 1/2	.10 1/2
Whipple's Early White	.08	.09	.10

#### Yellow Varieties (100 lbs. per bag)

Golden Bantam (8 row)	.08	.09	.10
Golden Country Gentleman (Golden Colonel)	.07 1/2	.08 1/2	.09 1/2
Golden Sunshine	.09	.10	.11
Whipple's Yellow	.08	.09	.10
Wonder Bantam, Barden's (8 row)	.08	.09	.10
Golden Evergreen, Mid Season	.08	.09	.10
Golden Giant	.08 1/2	.09 1/2	.10 1/2

#### Early White Table Varieties (112 lbs. per bag)

Early Adams	.06	.07	.08
Extra Early Adams	.06 1/2	.07 1/2	.08 1/2
Early Table	.07 1/2	.08 1/2	.09 1/2
Snowflake	.05 1/2	.06 1/2	.07 1/2
Trucker's Favorite	.05 1/2	.06 1/2	.07 1/2

### GARDEN PEAS

Wrinkled Varieties Marked\*  
(Wrinkled Peas, 112 lbs., Smooth Peas, 120 lbs. per bag)  
Extra Early and Early Varieties

	Full Bag Lots	30 Lbs. & over	10 to 29 Lbs.	1 to 9 Lbs.
<b>Note: 10 bag lots 1/2 less</b>	Per Lb.	Per Lb.	Per Lb.	Per Lb.
Alaska	.06 1/2	.07	.08	.09
Alaska Wilt Resistant	.07	.07 1/2	.08 1/2	.09 1/2
Ameer (Claudit, Mam. Pod Alaska)	.07 1/2	.08	.09	.10
American Wonder	.08 1/2	.09	.10	.11
Dwarf Tom Thumb	.11 1/2	.12	.13	.14
First and Best	.07	.07 1/2	.08 1/2	.09 1/2
Gradus	.08 1/2	.09	.10	.11
Hundredfold	.08 1/2	.09	.10	.11
Laxtonian	.08 1/2	.09	.10	.11
Laxton's Progress	.08 1/2	.09	.10	.11
Laxton's Superb (Early Bird)	.09 1/2	.10	.11	.12
Little Marvel	.08 1/2	.09	.10	.11
Mammoth Pod Extra Early	.09	.09 1/2	.10 1/2	.11 1/2
Nott's Excelsior	.08 1/2	.09	.10	.11
Premium Gem (Little Gem)	.08 1/2	.09	.10	.11
Premium Gem, Wilt Resistant	.08	.08 1/2	.09 1/2	.10 1/2
Sutton's Excelsior	.08 1/2	.09	.10	.11
Thomas Laxton	.09	.09 1/2	.10 1/2	.11 1/2
World's Record	.08 1/2	.09	.10	.11

#### Second Early and Late

Alderman	.08 1/2	.09	.10	.11
Bliss Everbearing	.08 1/2	.09	.10	.11
Champion of England	.08 1/2	.09	.10	.11
Dwarf Alderman	.08 1/2	.09	.10	.11
Dwarf Gray Sugar, Edible Pods	.09 1/2	.10	.11	.12
Dwarf Telephone	.08 1/2	.09	.10	.11
Tall Melting Sugar, Edible Pods	.11	.11 1/2	.12 1/2	.13 1/2
Telephone	.08 1/2	.09	.10	.11
White Marrowfat, Large	.07 1/2	.08	.09	.10

#### Field Peas

Brown Sugar Crowder	.08	.08 1/2	.09 1/2	.10 1/2
California Black Eye	.07	.07 1/2	.08 1/2	.09 1/2
Canadian, Yellow	.05	.05 1/2	.06 1/2	.07 1/2
White Lady	.09 1/2	.10	.11	.12

Order your supply of Keystone Bulk Garden Seeds NOW and get them on display early. Window signs, hanger signs and other advertising matter will be included with each shipment.

ASPARAGUS

Table with 2 columns: Variety (Mary Washington, Palmetto) and Price (Per Lb. \$0.45, .55)

BEETS

Table with 4 columns: Variety, Lbs. (25 to 49, 5 to 24, 1 to 4), and Price (Per Lb. \$0.28, \$0.30, \$0.35)

Sugar Beets and Mangel Wurzel

Table with 4 columns: Variety (Golden Tankard, Mammoth Long Red, etc.) and Price (Per Lb. \$0.20, \$0.22, \$0.25)

BROCCOLI

Italian Green Sprouting

Table with 2 columns: Variety (Italian Early Calabrese, Extra Early Propagene) and Price (Per Lb. \$1.35, 1.45)

BRUSSELS SPROUTS

Table with 2 columns: Variety (Paris Half Dwarf, Long Island Improved) and Price (\$0.90, 1.00)

CABBAGE

Table with 4 columns: Variety, Lbs. (25 to 99, 5 to 24, 1 to 4), and Price (Per Lb. \$0.70, \$0.73, \$0.78)

Yellows Resistant Varieties

Table with 4 columns: Variety (All Head Early, All Seasons, Golden Acre, etc.) and Price (\$1.30, \$1.33, \$1.38)

Red Cabbage

Table with 4 columns: Variety (Haco, Earliest Round Red, Keystone Red Rock, etc.) and Price (\$1.95, 1.98, 2.03)

Chinese Cabbage

Table with 4 columns: Variety (Wong Bok, Chihhl, Pe Tsai) and Price (\$0.55, \$0.58, \$0.63)

CARROTS

Table with 4 columns: Variety, Lbs. (25 to 74, 5 to 24, 1 to 4), and Price (Per Lb. \$0.35, \$0.37, \$0.40)

CAULIFLOWER

Denmark

Table with 3 columns: Variety (Early Snowball, Danish Giant, etc.) and Price (Per Lb. \$10.00, Per Oz. \$1.00)

CELERY

Table with 3 columns: Variety (Easy Blanching, Florida Golden, etc.) and Price (Per Lb. \$1.35, Per Oz. \$0.15)

COLLARDS

Table with 4 columns: Variety, Lbs. (25 to 99, 5 to 24, 1 to 4), and Price (Per Lb. \$0.18, \$0.20, \$0.23)

CORN SALAD

Table with 3 columns: Variety (Large Leaved) and Price (Per Lb. \$0.55, Per Oz. \$0.60)

CUCUMBERS

Varieties listed in Capitals can be supplied in 1-pound Keystone cotton bags, sealed with lead seal at the regular 1 to 4 pound price.

Table with 4 columns: Variety, Lbs. (25 to 99, 5 to 24, 1 to 4), and Price (Per Lb. \$0.38, \$0.40, \$0.43)

EGG PLANT

Table with 3 columns: Variety (Black Beauty, Early Long Purple, etc.) and Price (Per Lb. \$2.90, \$3.00)

ENDIVE

(75 lbs. bags 4 cents less)

Table with 3 columns: Variety (Broad Leaf Escarolle, Broad Leaved, etc.) and Price (Per Lb. \$0.40, \$0.45)

KALE

(100 lbs. or over, 2 cents less)

Table with 4 columns: Variety, Lbs. (25 to 99, 5 to 24, 1 to 4), and Price (Per Lb. \$0.32, \$0.35, \$0.40)

KOHLRABI

Table with 3 columns: Variety (Early Purple Vienna, Early White Vienna, etc.) and Price (\$1.10, \$1.15, \$1.20)

LEEK

Table with 3 columns: Variety (Elephant, Large London Flag, Lion) and Price (\$1.10, \$0.15, \$1.20)

LETTUCE

Non-Heading or loose-leaved varieties marked \*

(100 lbs. or more, 2 cents less)

Table with 4 columns: Variety, Lbs. (25 to 99, 5 to 24, 1 to 4), and Price (Per Lb. \$0.40, \$0.42, \$0.45)

MUSKMELON AND CANTALOUPE

Our Cantaloupe seed is grown in the Rocky Ford district of Colorado and is saved from hand selected HAND CUT melons (not machine threshed).

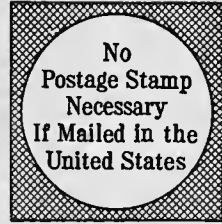
Varieties listed in Capitals can be supplied in 1-pound Keystone cotton bags sealed with Keystone seal at the regular 1 to 4 lbs. price

Green Fleshed Varieties

Table with 4 columns: Variety, Lbs. (25 to 74, 5 to 24, 1 to 4), and Price (Per Lb. \$0.46, \$0.48, \$0.51)

Pink or Orange Fleshed Varieties (75 Lbs. or more, 2 cents less)

Table with 3 columns: Variety (Banana, Benders Surprise, etc.) and Price (Per Lb. \$0.38, \$0.40, \$0.43)



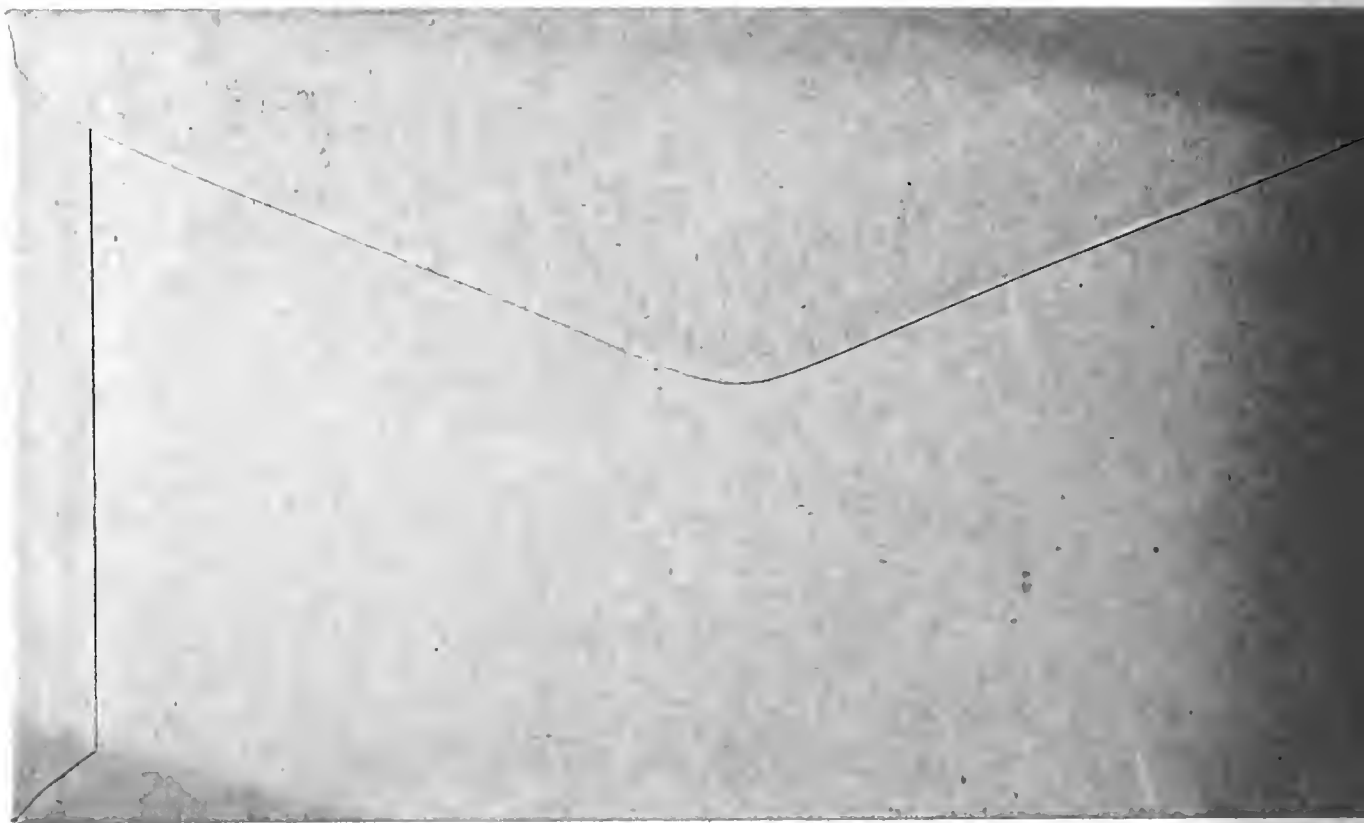
**BUSINESS REPLY ENVELOPE**  
First Class Permit No. 141, Sec. 510, P. L. & R. St. Louis, Mo.

**CORNELI SEED CO.**

**101 CHOUTEAU AVE.**

**ST. LOUIS, MO.**





# KEYSTONE SALES HELPS

ARE YOU TAKING FULL ADVANTAGE OF THE MANY SALES HELPS WE OFFER? HERE ARE A FEW. LOOK THIS SHEET OVER CAREFULLY - MAKE YOUR SELECTION AND ORDER TODAY. SOME ARE FREE.

## KEYSTONE Bulk Garden Seed Display Rack



Size - 39" high - 34" wide - 3 shelves 10" high, capacity 24 jars and paper bags - varnished natural wood finish with enameled Keystone Seed Sign on top panel, Each ..... \$3.50

## GLASS JARS Pouring Spout Caps



1 qt. square jars with pouring spout caps, Per Case (one dozen) 85¢  
Pouring spout caps only Per Dozen ..... 25¢

## MEASURING GLASS



To efficiently speed up sales of small amounts of Bulk Garden Seed Each ..... 35¢

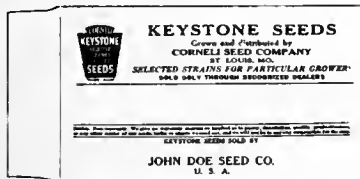


Catalog giving accurate descriptions of Vegetables. Imprinted with your name Per 100 ..... \$5.00

## LITHOGRAPHED JAR LABELS

Send for list Full set of 267 labels ..... \$1.00 Small lots 1¢ each.

## HEAVY KRAFT PAPER SEED BAGS



UNPRINTED Per 1000

Printed with your Firm Name, Keystone Emblem and Non-warranty Per 1000

1 Oz. Flat, Gummed Kraft, Printed with Keystone Ad and Non-warranty (as illustrated).....	\$0.90	\$1.25*
1 Oz. Flat, Gummed.....	.90	1.25*
2 Oz. Flat, Gummed.....	2.00	3.00
4 Oz. Flat, Gummed.....	2.50	3.50
1 Pint Satchel Bottom.....	3.50	4.50
1 Qt. Satchel Bottom.....	4.00	5.00

\*5,000 or more 1 oz. bags, imprinted at \$1.00 per 1,000.

## ENAMELED METAL BUSHEL MEASURES (With Cover)



Ideal display containers for peas, beans, corn, etc. during spring season. Bright red enamel with Keystone Seed Sign and Emblem - lid enameled green. After selling season, can be used to store seeds away or sold to your customers as they are always in demand on the farm. Retail Value \$1.75 Ea. 79¢

## EMBOSSSED SIGN



A beautiful shingle type sign for indoors. Embossed white letters and green Keystone on deep red background. Size 7 x 19 inches. Order one today FREE

## EMBOSSSED SIGN

Shingle type with your firm name on it to hang in your seed department. Size 5 1/2 x 13 1/2 FREE

## KEYSTONE SIGN



Size - 22 x 34 inches Attractive waterproof fibre sign in flaming red with white letters and green Keystone. If you have none, send for one or two today. FREE

## MATS

For Local Newspaper Advertising

Send for folder showing wide variety of both one and two column mats in various sizes. FREE

## NEW 1938 CALENDAR

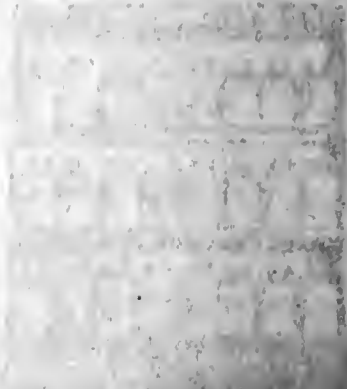
And Planting Chart. The planting chart is the most complete we know of and is almost a necessity in your seed department. If you did not get yours, write for one. FREE



# KEYSTONE

FOR THE YEAR 1910

1910  
No. 1



THE  
LIBRARY OF THE  
UNIVERSITY OF  
MICHIGAN  
ANN ARBOR, MICH.

1910  
No. 1

1910



THE  
LIBRARY OF THE  
UNIVERSITY OF  
MICHIGAN  
ANN ARBOR, MICH.



1910  
No. 1



CANTALOUPE SEED, CROWN SET

To meet a demand for cantaloupe seed of commercial varieties in stock seed grade we offer the following strains. This seed is from the first or crown set of fruits only.

	25 lb. Sealed Bags Per Lb.	1 Lb. Sealed Bags
HALE'S BEST, IMPROVED, Crown Set..... Medium large; short oval shape; heavily netted. Best general purpose.	\$ 0.50	\$ 0.60
HALE'S BEST, NO. 36, Crown Set..... Small, shipping size; round; heavily netted; very thick flesh	.50	.60
HALE'S BEST, NO. 936..... New, very uniform, medium large.	.50	.60
HEARTS OF GOLD, Crown Set.....	.50	.60
KEYSTONE WINNER (New H.B.) Crown Set..... The newest and finest cantaloupe of Hales Best type. Good shipping size, round, heavily netted, extremely thick flesh, small seed cavity, delicious flavor and unsurpassed for shipping qualities.	.50	.60
PERFECTO IMPROVED, Crown Set.....	.50	.60

WATERMELON

	25 to 74 Lbs. Per Lb.	5 to 24 Lbs. Per Lb.	1 to 4 Lbs. Per Lb.
(75 lbs. or more, 1 cent less)			
Alabama Sweet.....	\$ 0.28	\$ 0.30	\$ 0.33
Cole's Early.....	.28	.30	.33
Cuban Queen (Black Seed).....	.30	.32	.35
*DIXIE QUEEN (Small White Seed).....	.55	.57	.60
Early Kansas.....	.36	.38	.41
*Excell.....	.28	.30	.33
Florida Favorite.....	.28	.30	.33
Georgia Rattlesnake.....	.28	.30	.33
Golden Honey.....	.30	.32	.35
*Halbert's Honey.....	.28	.30	.33
Harris' Early.....	.28	.30	.33
*Irish Grey.....	.28	.30	.33
*Kleckley's Sweet or Monte Cristo.....	.28	.30	.33
Koib Gem.....	.28	.30	.33
Long Dixie.....	.28	.30	.33
Red Citron.....	.30	.32	.35
*Schochier.....	.28	.30	.33
*Stone Mountain or Dixie Bell.....	.29	.31	.34
Sweetheart.....	.28	.30	.33
Thurmond Grey.....	.28	.30	.33
*Tom Watson, Improved.....	.28	.30	.33
*Wondermelon (Imp. Kleckley's Sweet).....	.28	.30	.33

MUSTARD

	25 to 99 Lbs. Per Lb.	5 to 24 Lbs. Per Lb.	1 to 4 Lbs. Per Lb.
(100 lbs. and over, 1 cent less)			
Chinese Broad Leaf.....	\$ 0.17	\$ 0.19	\$ 0.21
Florida Broad Leaf.....	.17	.19	.21
Fordhook Fancy Curled.....	.17	.19	.21
Southern Giant Curled.....	.17	.19	.21
SOUTHERN GIANT CURLED (LONG STANDING).....	.20	.22	.24
Yellow or White London.....	.17	.19	.21
Ostrich Plume.....	.20	.22	.24
TENDERGREEN (JAP. MUSTARD SPINACH).....	.16	.18	.20

OKRA OR GUMBO

	25 to 99 Lbs. Per Lb.	5 to 24 Lbs. Per Lb.	1 to 4 Lbs. Per Lb.
(100 lbs. and over, 1 cent less)			
Improved Dwarf Green.....	\$ 0.18	\$ 0.19	\$ 0.20
Long Green (Perkins Mammoth Tall).....	.18	.19	.20
White Velvet.....	.18	.19	.20
Dwarf Green Prolific.....	.18	.19	.20
Dwarf Long Pod, Green.....	.20	.21	.22

ONION

	25 to 99 Lbs. Per Lb.	5 to 24 Lbs. Per Lb.	1 to 4 Lbs. Per Lb.
(100 lbs. and over, 5 cents less)			
Australian Brown.....	\$ 0.90	\$ 0.95	\$ 1.00
Danver's Yellow Globe.....	1.00	1.05	1.10
Ebenezer or Japanese Yellow.....	1.00	1.05	1.10
Mammoth Silver King (Imported).....	1.05	1.10	1.15
Philadelphia White Silver Skin.....	1.00	1.05	1.10
Red Wethersfield.....	.95	1.00	1.05
Southport Red Globe.....	.95	1.00	1.05
Southport White Globe.....	1.20	1.25	1.30
Southport Yellow Globe.....	.95	1.00	1.05
Southport Yellow Globe, Brigham Strain.....	.95	1.00	1.05
Sweet Spanish (Valencia, Riverside).....	1.05	1.10	1.15
White Sweet Spanish.....	1.30	1.35	1.40
White Lisbon.....	1.10	1.15	1.20
White Portugal.....	1.00	1.05	1.10
Yellow Giant Przetaker.....	.95	1.00	1.05

BERMUDA ONION

	25 Lbs. Tins Per Lb.	5 to 24 Lbs. Per Lb.	1 to 4 Lbs. Per Lb.
1937 Crop Genuine Tenerife Island Grown.....	\$ 1.15	\$ 1.20	\$ 1.25
Yellow Bermuda.....	1.25	1.30	1.35
Crystal Wax.....	1.25	1.30	1.35

Seed is packed in 25-lb. sealed tins, 2 tins per case, but may be ordered in any quantity, in bulk.

PARSLEY

	25 Lbs. Per Lb.	5 to 24 Lbs. Per Lb.	1 to 4 Lbs. Per Lb.
(50 lbs. 2¢ less)			
Doubled Curled.....	\$ 0.20	\$ 0.22	\$ 0.25
Hamburg (Edible Root).....	.20	.22	.25
Moss Curled.....	.20	.22	.25
Plain.....	.20	.22	.25

PARSNIP

	25 Lbs. Per Lb.	5 to 24 Lbs. Per Lb.	1 to 4 Lbs. Per Lb.
(50 lbs. 2¢ less)			
Improved Guernsey.....	\$ 0.25	\$ 0.27	\$ 0.29
Large Hollow Crown.....	.25	.27	.29

PEPPER

	25 Lbs. or More Per Lb.	5 to 24 Lbs. Per Lb.	1 to 4 Lbs. Per Lb.
Pungent or "Hot" Varieties			
Anasheim Chile.....	\$ 2.00	\$ 2.05	\$ 2.15
Hungarian Wax.....	3.20	3.25	3.35
Long Red Cayenne (Slim).....	1.60	1.65	1.75
Red Chile.....	2.00	2.05	2.15
Bird (Feed) Hot.....	.26	.28	.30

PEPPER—Continued

	25 Lbs. or more Per Lb.	5 to 24 Lbs. Per Lb.	1 to 4 Lbs. Per Lb.
Sweet Varieties			
California Wonder.....	\$ 2.70	\$ 2.75	\$ 2.85
Chinese Giant.....	2.60	2.65	2.75
Cornell's Special.....	1.00	1.05	1.15
Harris' Early Giant.....	1.60	1.65	1.75
Large Bell or Bullnose.....	1.60	1.65	1.75
Large Yellow (Oshkosh).....	3.35	3.40	3.50
Ohio Crimson.....	2.00	2.05	2.15
Pimento or Perfection.....	1.60	1.65	1.75
Royal King.....	1.60	1.65	1.75
Ruby King (Select).....	1.60	1.65	1.75
Sweet Mountain.....	1.60	1.65	1.75
World Beater.....	1.60	1.65	1.75

PUMPKIN

	25 to 74 Lbs. Per Lb.	5 to 24 Lbs. Per Lb.	1 to 4 Lbs. Per Lb.
(75 lbs. or more, 2 cents less)			
Connecticut Field (Big Tom).....	\$ 0.32	\$ 0.34	\$ 0.37
Cushaw Crookneck, Golden.....	.46	.48	.51
Cushaw Crookneck, Green Striped.....	.39	.41	.44
Cushaw Crookneck, White.....	.42	.44	.47
Early Sugar.....	.31	.36	.39
Japanese Pie.....	.39	.41	.44
KENTUCKY FIELD.....	.16	.18	.20
King of the Mammoth.....	.42	.44	.47
Large Cheese.....	.32	.34	.37
Tennessee Sweet Potato.....	.40	.42	.45
Winter Luxury.....	.44	.46	.49

RADISH

	25 to 99 Lbs. Per Lb.	5 to 24 Lbs. Per Lb.	1 to 4 Lbs. Per Lb.
(100 lbs. or more, 2 cents less)			
California White Mammoth.....	\$ 0.28	\$ 0.30	\$ 0.33
Chartier Long Rose, White Tip.....	.28	.30	.33
Crimson Giant.....	.28	.30	.33
Early Long Scarlet, Short Top.....	.28	.30	.33
Early Scarlet Turnip.....	.28	.30	.33
Early Scarlet Turnip, White Tip.....	.28	.30	.33
Early Scarlet Turnip, White Tip, Forcing.....	.28	.30	.33
Early White Turnip.....	.28	.30	.33
EARLY SCARLET GLOBE, SPECIAL.....	.28	.30	.33
French Breakfast.....	.28	.30	.33
Icicle.....	.27	.29	.32
Long Brightest Scarlet, Cardinal.....	.24	.26	.29
Long White, Lady Finger.....	.28	.30	.33
Philadelphia White Box.....	.32	.34	.37
Rapture (New Scarlet White Tip).....	.24	.26	.29
Saxa.....	.28	.30	.33
SCARLET BALL.....	.30	.32	.35
Scarlet Globe, Vick's.....	.28	.30	.33
SPARKLER WHITE TIP.....	.28	.30	.33
St. Louis White Summer.....	.28	.30	.33
Strasburg White Summer.....	.29	.31	.34
Yellow Summer Turnip.....	.34	.36	.39

Winter Varieties

	25 to 99 Lbs. Per Lb.	5 to 24 Lbs. Per Lb.	1 to 4 Lbs. Per Lb.
Long Black Spanish.....	\$ 0.29	\$ 0.31	\$ 0.34
Round Black Spanish.....	.29	.31	.34
Rose-Colored China.....	.28	.30	.33

RHUBARB

	Per Lb.
Victoria.....	\$ 1.00
Linneus (Red).....	1.00

SALSIFY

	Per Lb.
Mammoth Sandwich Island.....	\$ 0.70

SPINACH

Our SPINACH strains are selected from the finest Holland grown stock by TRIAL GROUND TESTS on our Keystone Valley Farm

Holland Grown—Re-Selected Stock	100 to 500 Lbs. Per Lb.	25 to 99 Lbs. Per Lb.	5 to 24 Lbs. Per Lb.	1 to 4 Lbs. Per Lb.
500 lbs or more, 1/2¢ less				
Bloomdale, Savoy Re-selected.....	\$ .12	\$ .13	\$ .14	\$ .15
Bloomdale, Dark Green.....	.13	.14	.15	.16
Bloomdale, Blight Resistant.....	.12 1/2	.13 1/2	.14 1/2	.15 1/2
Bloomdale, Long Standing.....	.13	.14	.15	.16
Pianders Broad Leaf.....	.12 1/2	.13 1/2	.14 1/2	.15 1/2
Giant Thick Leaved, Nobel.....	.14	.15	.16	.17
King of Denmark.....	.14	.15	.16	.17
New Zealand.....	.18	.19	.20	.21
Old Dominion (Blight Resistant).....	.13 1/2	.14 1/2	.15 1/2	.16 1/2
Round Thick Leaved.....	.14	.15	.16	.17
Victoria.....	.13 1/2	.14 1/2	.15 1/2	.16 1/2
Viking.....	.13 1/2	.14 1/2	.15 1/2	.16 1/2
Virginia Savoy (American grown).....	.12 1/2	.13 1/2	.14 1/2	.15 1/2
Viroflay.....	.12 1/2	.13 1/2	.14 1/2	.15 1/2

Prickly Seeded Varieties

	Per Lb.
Amsterdam.....	.12
Cornell's Giant.....	.13
Hollandia.....	.12
Presto (Savoy).....	.18
Prickly Winter.....	.13

SQUASH

	25 to 74 Lbs. Per Lb.	5 to 24 Lbs. Per Lb.	1 to 4 Lbs. Per Lb.
(75 lbs. or more, 2 cents less)			
Summer Varieties			
Cocozele or Italian Vegetable Marrow (bush).....	\$ 0.40	\$ 0.42	\$ 0.45
Early White Bush Scallop.....	.36	.38	.41
Mammoth White Bush Scallop.....	.37	.39	.42
Early Yellow Bush Scallop.....	.37	.39	.42
Early Summer Crookneck, Yellow.....	.36	.38	.41
Giant Summer Crookneck, Yellow.....	.39	.41	.44
Giant Straightneck, Yellow.....	.39	.41	.44
Zucchini, Gray Green.....	.42	.44	.47
Zucchini, Black.....	.46	.48	.51

Fall and Winter Varieties

	25 to 74 Lbs. Per Lb.	5 to 24 Lbs. Per Lb.	1 to 4 Lbs. Per Lb.
Banana.....	\$ 0.42	\$ 0.44	\$ 0.47
Boston Marrow.....	.42	.44	.47
Delicious.....	.42	.44	.47
Des Moines or Table Queen.....	.42	.44	.47
Hubbard, Golden.....	.42	.44	.47
Hubbard Improved.....	.42	.44	.47
Hubbard, Chicago Warted.....	.42	.44	.47
Winter Crookneck, Golden.....	.43	.45	.48

**TOMATO**

Varieties in CAPITALS can be supplied Semesan treated, packed in 1/4 lb., 2 oz. and 1 oz. packages at these prices

Red or Scarlet Fruited Varieties	50 Lbs.	5 to 49	1 to 4
	or more Per Lb.	Lbs. Per Lb.	Lbs. Per Lb.
Bonny Best.....	\$ 1.50	\$ 1.55	\$ 1.65
BREAK O'DAY.....	2.60	2.65	2.75
Chalk's Early Jewel.....	1.50	1.55	1.65
CHALK'S EARLY JEWEL, CERTIFIED.....	1.75	1.80	1.90
Clark's Early.....	2.00	2.05	2.15
Dwarf Stone.....	2.75	2.80	2.90
Earlana.....	2.00	2.05	2.15
GREATER BALTIMORE.....	1.25	1.30	1.40
GREATER BALTIMORE, CERTIFIED.....	1.50	1.55	1.65
Grothen's Red Globe.....	2.60	2.65	2.75
John Baer.....	1.50	1.55	1.65
Louisiana, Red.....	2.35	2.40	2.50
MARGLOBE, WILT RESISTANT(Keystone).....	2.00	2.05	2.15
MARGLOBE, W. R. (Keystone), Certified.....	2.25	2.30	2.40
MASTER MARGLOBE Certified (1 lb. bags).....	2.50	2.55	2.65
Marketeer.....	2.00	2.05	2.15
MATCHLESS.....	1.30	1.35	1.45
McGEE.....	2.00	2.05	2.15
NORTON, WILT RESISTANT.....	1.75	1.80	1.90
Penn State Self Topper.....	4.50	4.55	4.65
Perfection.....	1.50	1.55	1.65
PRITCHARD (Scarlet Topper).....	1.60	1.65	1.75
PRITCHARD, CERTIFIED.....	2.30	2.35	2.45
RUTGERS, CERTIFIED.....	2.30	2.35	2.45
RED ROCK.....	1.25	1.30	1.40
STONE, IMPROVED.....	1.25	1.30	1.40
STONE, IMPROVED CERTIFIED.....	1.50	1.55	1.65

**Crimson or Purplish Fruited Varieties**

	\$ 3.10	\$ 3.15	\$ 3.25
Brimmer.....	\$ 3.10	\$ 3.15	\$ 3.25
COOPER'S SPECIAL.....	2.25	2.30	2.40
Dwarf Champion (Tree Tomato).....	2.75	2.80	2.90
Dwarf Ponderosa.....	3.00	3.05	3.15
Early Detroit.....	2.50	2.55	2.65
GULF STATE MARKET.....	2.30	2.35	2.45
JUNE PINK.....	2.25	2.30	2.40
LIVINGSTON'S GLOBE.....	2.10	2.15	2.25
Livingston's Beauty.....	2.10	2.15	2.25
Louisiana, Pink.....	2.75	2.80	2.90
MARHO (NEW, PINK MARGLOBE).....	2.35	2.40	2.50
Ox Heart.....			8.00
Ponderosa.....	2.90	3.00	3.10

**Other Varieties**

	Per Lb.
Golden Queen.....	\$ 3.00
Ponderosa, Yellow.....	3.25
Yellow, Pear Shaped.....	3.00
Yellow, Plum Shaped.....	3.00
Red Cherry.....	3.00

**TURNIP**

(500 lbs., or over, total order, 1/2 cent less)

	100 to 500	25 to 99	5 to 24	1 to 4
	Lbs. Per Lb.	Lbs. Per Lb.	Lbs. Per Lb.	Lbs. Per Lb.
Aberdeen.....	\$ 0.18	\$ 0.19	\$ 0.20	\$ 0.23
Amber Globe.....	.18	.19	.20	.23
Extra Early Purple Top Milan.....	.23	.24	.25	.28
Extra Early White Milan.....	.23	.24	.25	.28
Japanese Shogoin.....	.15	.16	.17	.20
Large White Globe.....	.16	.17	.18	.21
Large Yellow Globe.....	.18	.19	.20	.23
Long White Cowhorn.....	.18	.19	.20	.23
Pomeranian White Globe.....	.16	.17	.18	.21
Purple Top, Strap Leaved.....	.17	.18	.19	.22
Purple Top, White Globe.....	.18	.19	.20	.23
Red Top, White Globe (Early).....	.18	.19	.20	.23
Southern Prize.....				
Seven Top or Winter Greens.....	.21	.22	.23	.26
Snow Ball.....	.16	.17	.18	.21
White Egg.....	.18	.19	.20	.23
White Flat Dutch.....	.16	.17	.18	.21

**RUTABAGA**

	\$ 0.18	\$ 0.19	\$ 0.20	\$ 0.23
American Yellow, Purple Top.....	\$ 0.18	\$ 0.19	\$ 0.20	\$ 0.23
Sweet German.....	.20	.21	.22	.25

**TOBACCO SEED**

Per Lb.

Connecticut Seed Leaf.....	\$ 3.00
Havana.....	3.00
Missouri Broad Leaf.....	3.00
White Burley.....	2.50
Judy's Pride.....	3.00

**FLOWER SEED**

Send for new complete Bulk Flower Seed Price List

**Sweet Peas**

	5 Lbs. and over Per Lb.	1 to 4 Lbs. Per Lb.
Cornell's Prize Spencer Mixed.....	\$ 0.60	\$ 0.65
Spencer Mixed.....	.37	.42
Eckford's Mixed.....	.31	.36
Grandiflora Mixed.....	.30	.35
Cupld or Dwarf, Mixed.....	.75	.80

**Nasturtium**

Dwarf Mixed.....	\$ 0.40	\$ 0.45
Tall Mixed.....	.38	.43
Golden Gleam.....	.45	.50

**Zinnia**

5 lbs., 10 cents per lb. less

Per Lb.

Colossal Giant, Mixed.....	\$ 2.50
Dahlia Flowering, Mixed.....	4.00
Lilliput, Mixed.....	3.50

**HERBS**

Herbs can also be supplied in packet at \$2.50 per 100

Per Lb.

Basil Sweet.....	\$ 0.85
Borage.....	.70
Caraway.....	.30
Cardoon.....	2.00
Chervil.....	.60
Coriander.....	.45
Dill, Long Island Mammoth.....	.30
Florence Fennel (Sweet Italian).....	.65
Poppy or Maw.....	.25
Rosemary.....	3.50
Sage Broadleaf.....	1.50
Sorrel Broadleaf.....	1.00
Summer Savory.....	.75
Sweet Marjoram.....	1.75
Sweet Thyme.....	2.00
Water Cress.....	2.00
Curled Cress.....	.25

**PLANET JR. GARDEN TOOLS**

Specialized Equipment for the COMMERCIAL GROWER  
MADE OF BEST MATERIALS BUILT TO LAST

We list a few of the most popular tools which we carry in stock in St. Louis  
Write for Planet Jr. Catalog

No.	Description	List Price
No. 3	—Hill and Drill Seeder.....	\$19.00
No. 4	—Combination Hill and Drill Seeder, Single Wheel Hoe, Cultivator and Plow.....	19.50
No. 4D	—As a Seeder only.....	15.50
No. 25	—Combination Hill and Drill Seeder, Double and Single Wheel Hoe, Cultivator and Plow.....	23.50
No. 300A	—Accurate Plate Seeder.....	21.00
No. 310	—Two-Row Hand Seeder, for Spinach, etc.....	37.50

All Prices F. O. B. St. Louis. Your Discount 25%

**ONION SETS**

PROMPT SHIPMENTS ONLY AT THESE PRICES.

Per bu.  
of 32 lbs.

Regular Sets in 2 bu. bags:	
Red, Yellow.....	1.30
White.....	1.40

No Extra Charge for Bags

WRITE FOR OUR SPECIAL COMPLETE INSECTICIDE PRICE LIST

**PAPER BAGS FOR YOUR SEED DEPARTMENT**

Genuine Heavy Kraft Seed Bags

Printed with your Firm Name, Keystone Emblem and Non-warranty

**UNPRINTED**

	Per 100	Per 1000	Per 1000
1 Oz. Flat, Gummed Kraft, Printed with Keystone Ad and Non-warranty.....	\$0.15	\$0.90	\$1.25
1 Oz. Flat, Gummed.....	.15	.90	1.25
2 Oz. Flat, Gummed.....	.30	2.00	3.00
4 Oz. Flat, Gummed.....	.40	2.50	3.50
1 Pint Satchel Bottom.....	.50	3.50	4.50
1 Qt. Satchel Bottom.....	.60	4.00	5.00

On orders of less than 1,000 printed, there will be a minimum printing charge of \$1.00 for each set up. Keystone 1 oz. bags minimum imprinting 35¢; 5,000 or more 1 oz. bags, imprinted at \$1.00 per 1,000.



**DISPLAY RACK, CATALOGS, NEW LITHOGRAPHED LABELS, POURING SPOUTS, Etc.**

FOR

**DISPENSING SMALL SEEDS**

F. O. B. St. Louis

New Catalog with accurate descriptions of Vegetables, imprinted with your name, per 100.....	\$ 5.00
New Lithographed Jar Labels for Keystone Bulk Garden seeds (send for list) 1/4 each or complete set of 267 labels.....per set....	1.00
1 Qt. Square Jar with pouring spout cap packed 1 doz. per case.....	.85
Pouring Spout and Cap only.....	.25
Measuring Glass with Chart.....	.35
Bulk Garden Seed Display Rack; 3 shelves holding 24 jars and paper bags, varnished natural wood finish with enameled Keystone Seed Sign on top panel.....	3.50

**CORNELI SEED COMPANY**

ST. LOUIS, MO.

FIELD SEEDS—Write For Our Complete List, "KEYSTONE KOMMENTS"